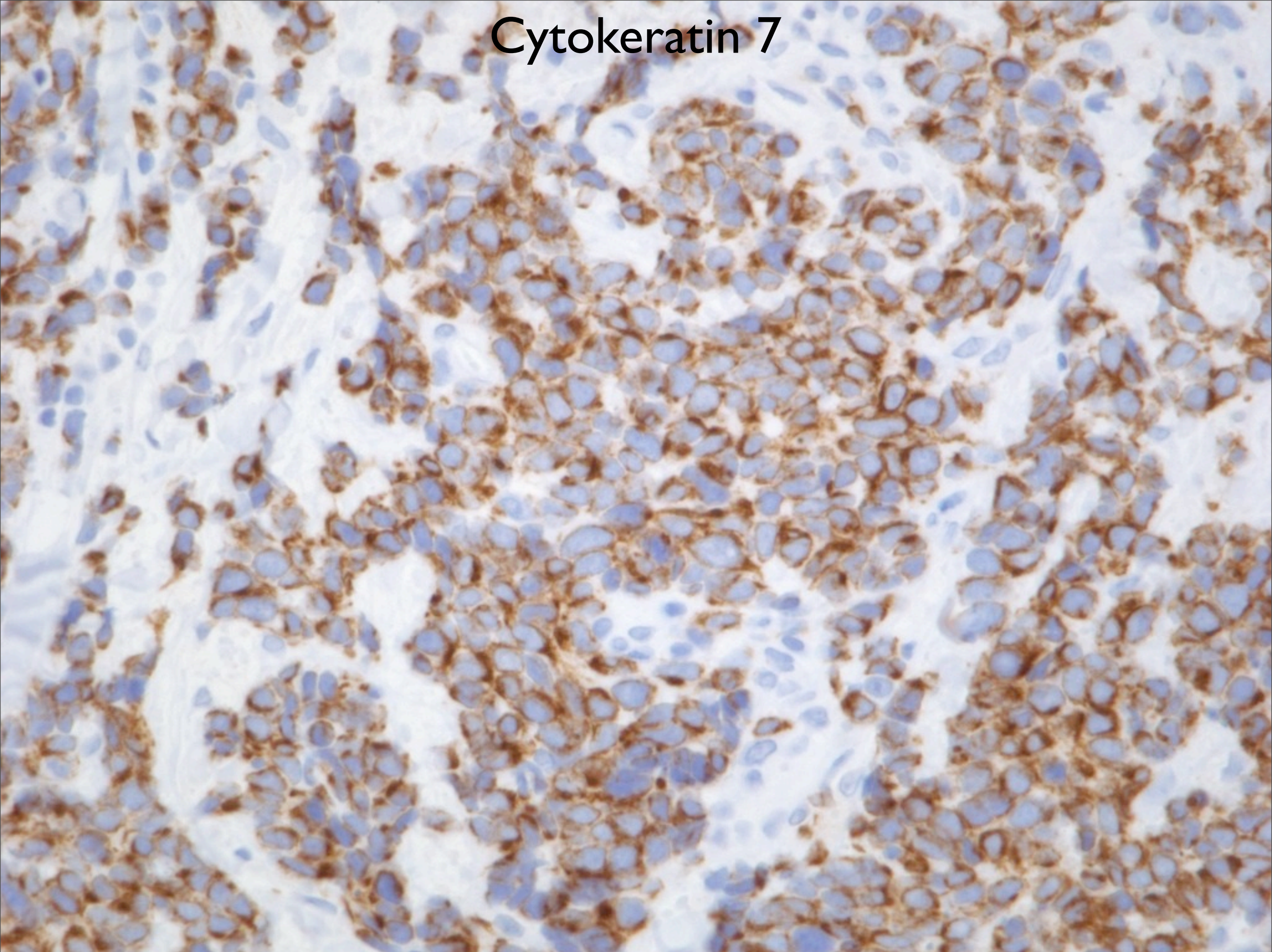
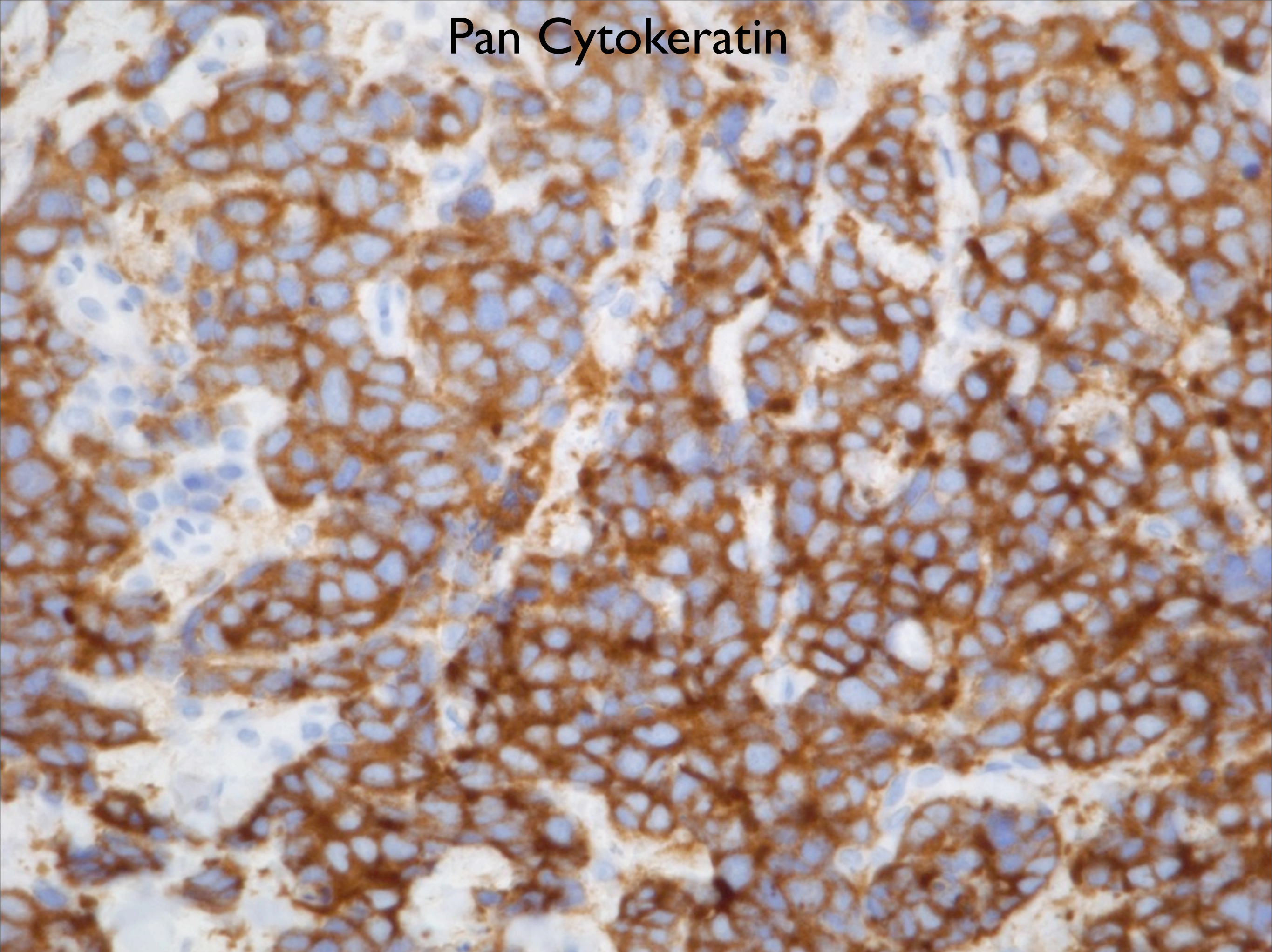


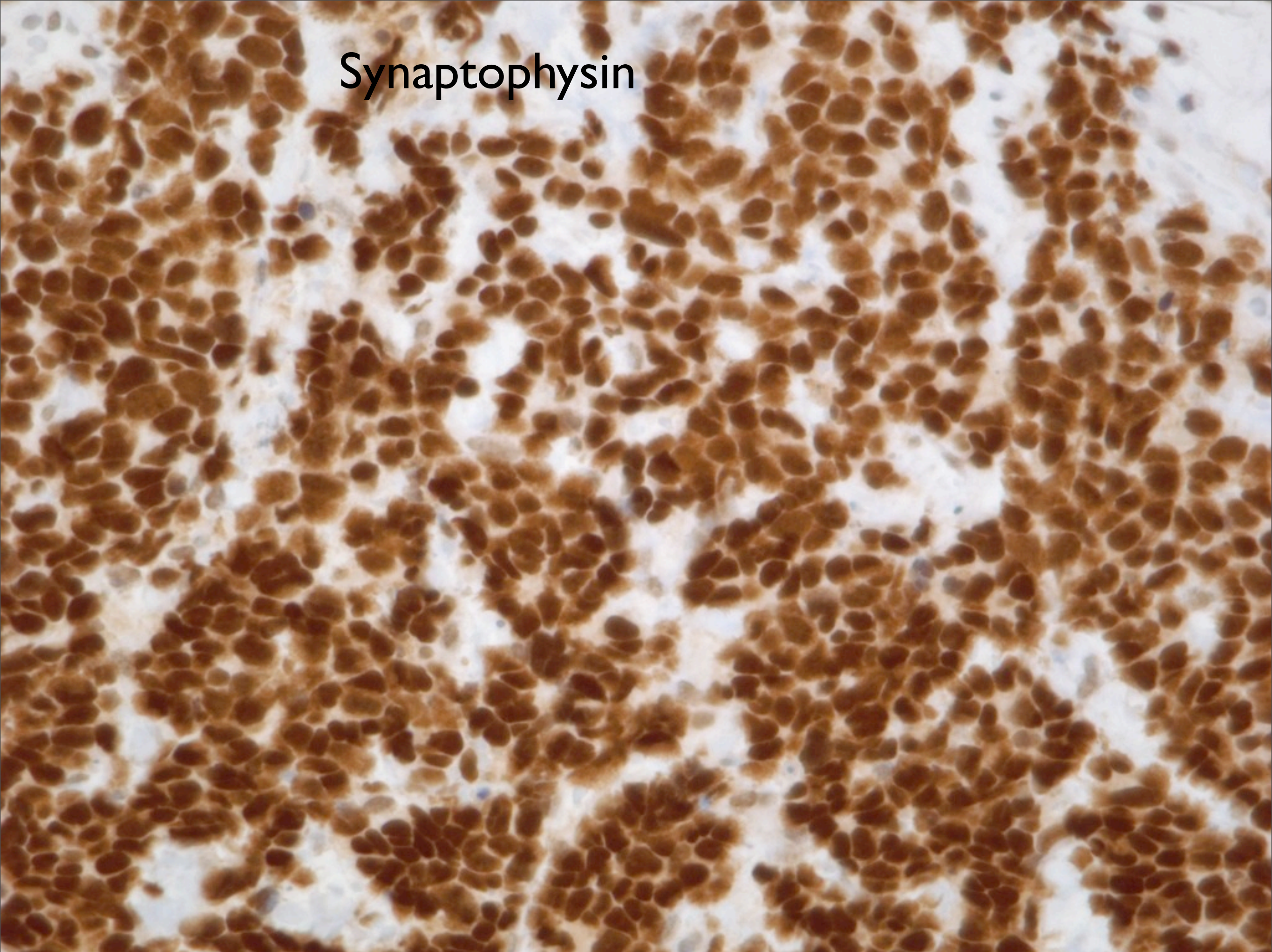
Cytokeratin 7



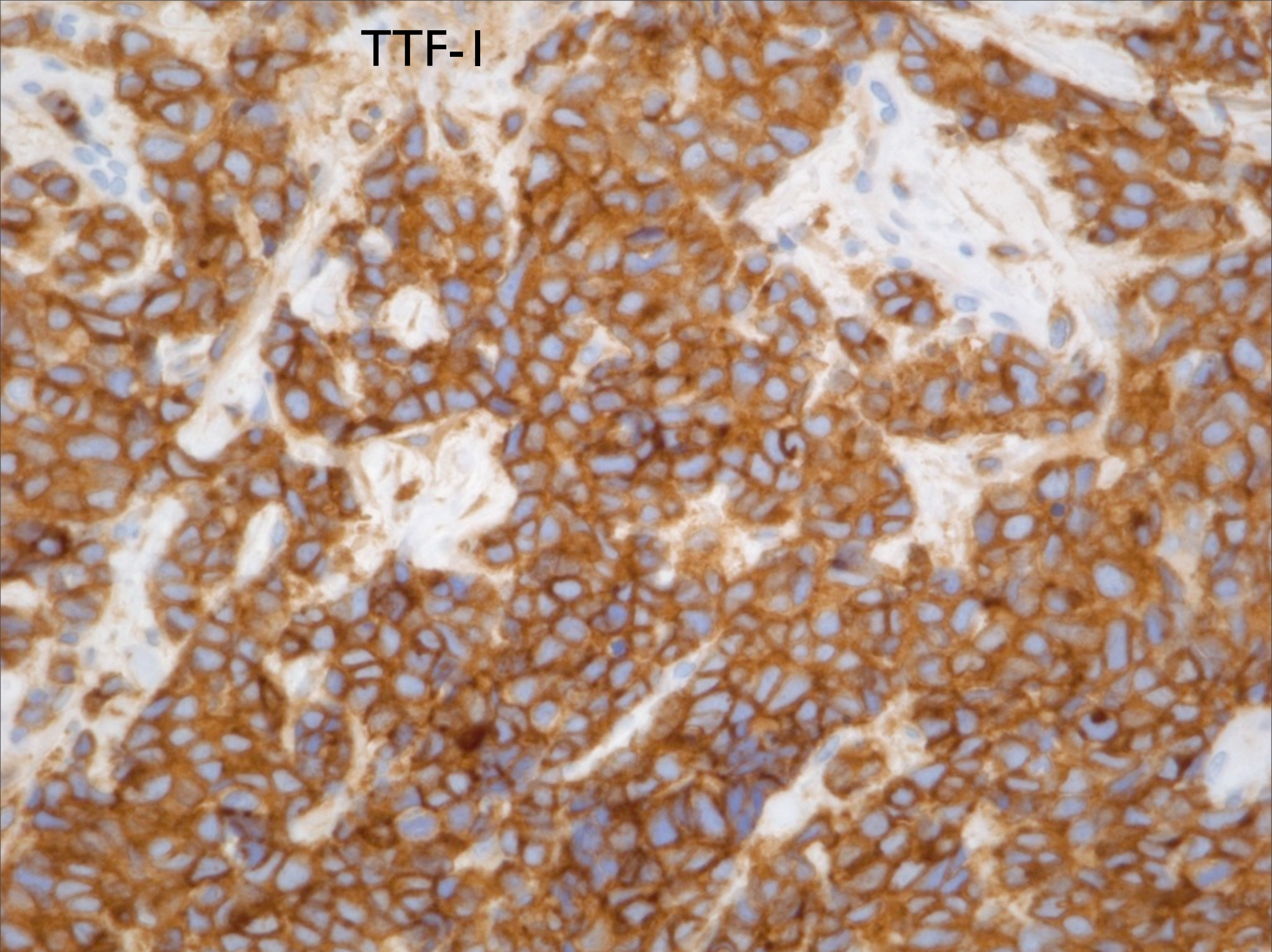
Pan Cytokeratin



Synaptophysin



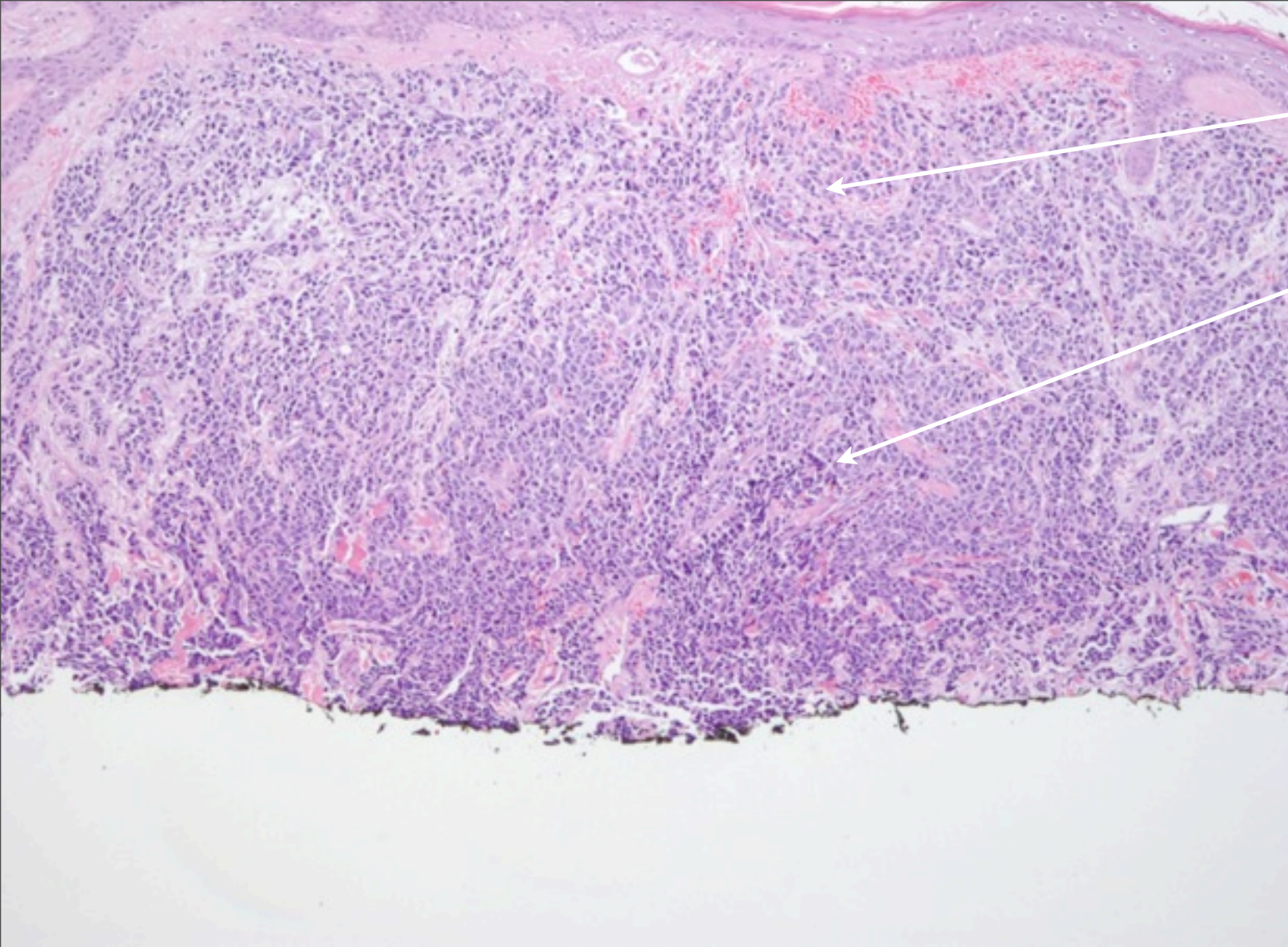
TTF-I



Small Cell Neuroendocrine Carcinoma from Lung, Metastatic to Skin

Notes

- Small cell carcinomas of visceral organs share significant histopathologic overlap with primary Merkel cell carcinomas of the skin
- In addition to the clinical history, additional immunohistochemical studies should be performed
- The typical immunohistochemical profile for Merkel cell carcinomas is Cytokeratin positive with CK20 showing paranuclear dot-like positivity with synaptophysin positive.
- In this current case, TTF-I was positive suggesting a lung origin as well as CK7 positive and CK20 negative.



Nuclear molding

Crush artifact

Stippled chromatin

Diffuse involvement of dermis by small
round blue cells